

# ARE<sup>®</sup> LIVE

**Programming, Planning and Practice Mock Exam**  
with Mike Newman

## PPP - MINI-MOCK EXAM

1. At the beginning of a project, what should the Owner give the Architect to start the project off?

a. CONTRACT BID

b. PROGRAM

c. SITE

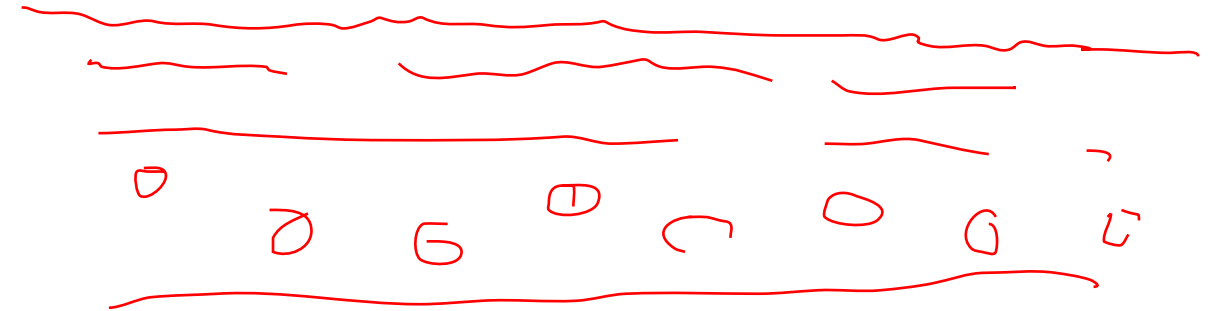
SURVEY  
GEO

CONTRACT  
FRACT MAN  
SCHEDULES

## PPP - MINI-MOCK EXAM

2. *During the Demo phases of construction of an adaptive reuse project, you are walking the site and notice what you assume to be asbestos tile. You should ...*

- a. Immediately stop the work on the site to allow the dangerous material to be removed appropriately
- b. Immediately tell the General Contractor to stop the work on the site so that they can remove the material appropriately
- c. Have the material encapsulated in place
- d. Show the material to the Owner and suggest that they should have an Environmental Review by a licensed environmental engineer



PHASE ONE

## PPP - MINI-MOCK EXAM

3. During Design Development, the Architect should use which of the following systems for producing a pricing estimate (or "opinion")?

- a. Assemblies system
- b. Square footage take-off
- c. Unit pricing
- d. An architect should never price a project, that is what the GC is for

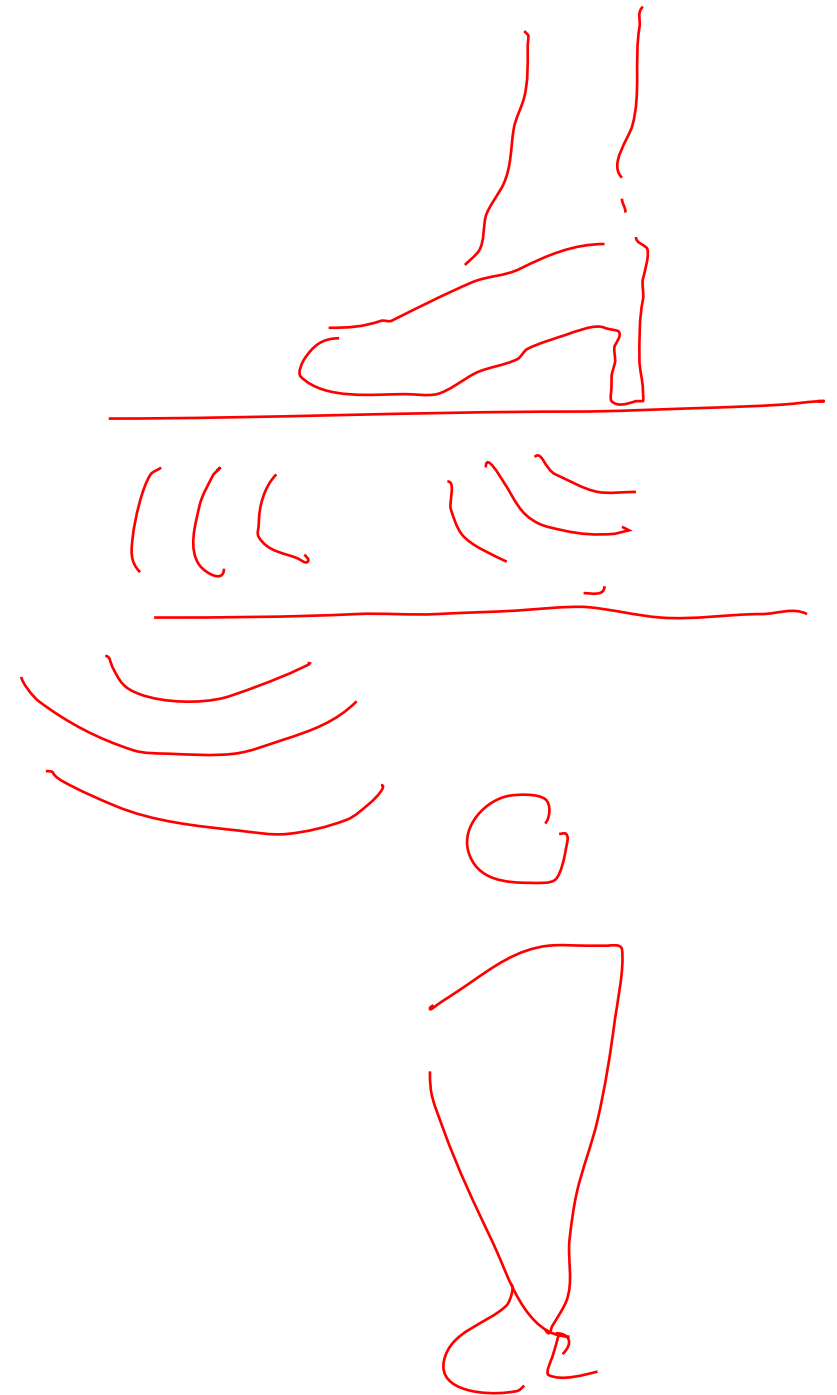
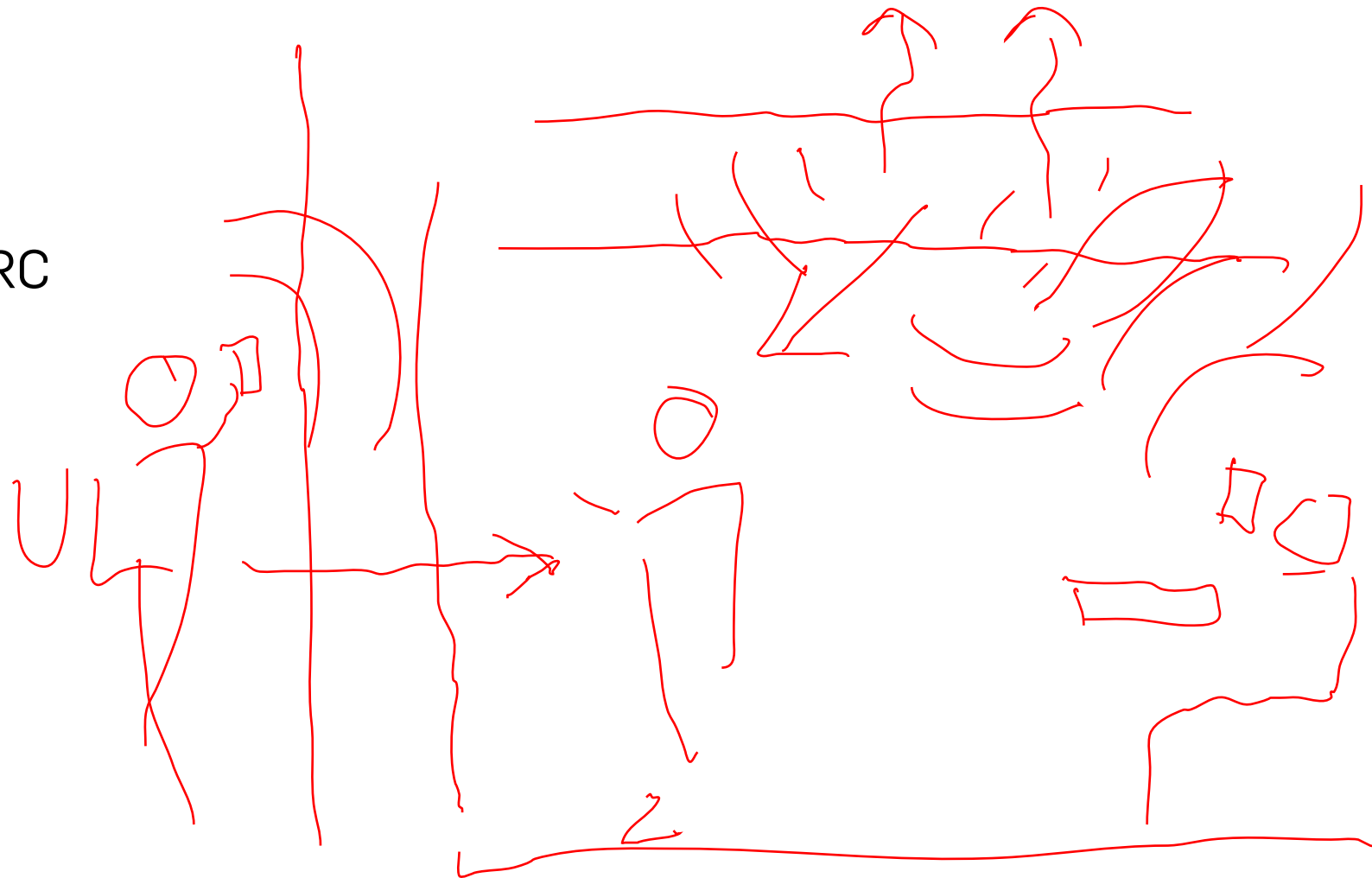
$(\$200/\square) 7000 \square$   
1400000

PRELIM  
- STD \$1,432,952  
- D D  
C D  
BID  
CA  
POST

## PPP - MINI-MOCK EXAM

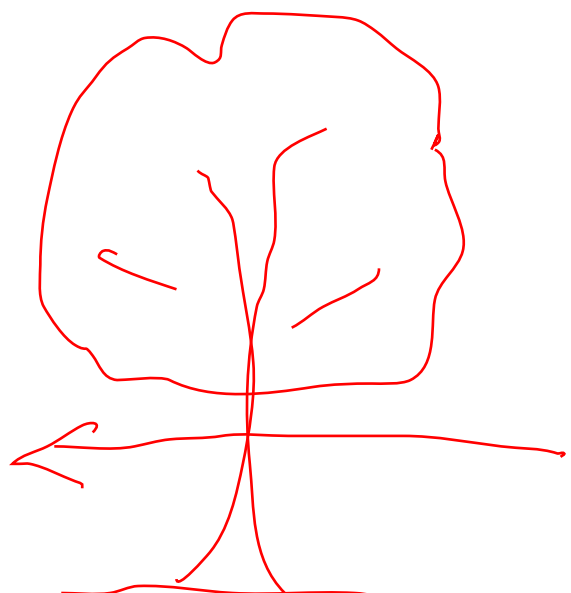
4. When considering issues of privacy in an office setting, the Architect should be conversant with...

- a. IIC
- b. STC & NRC
- c. NFPA
- d. ASTM



## PPP - MINI-MOCK EXAM

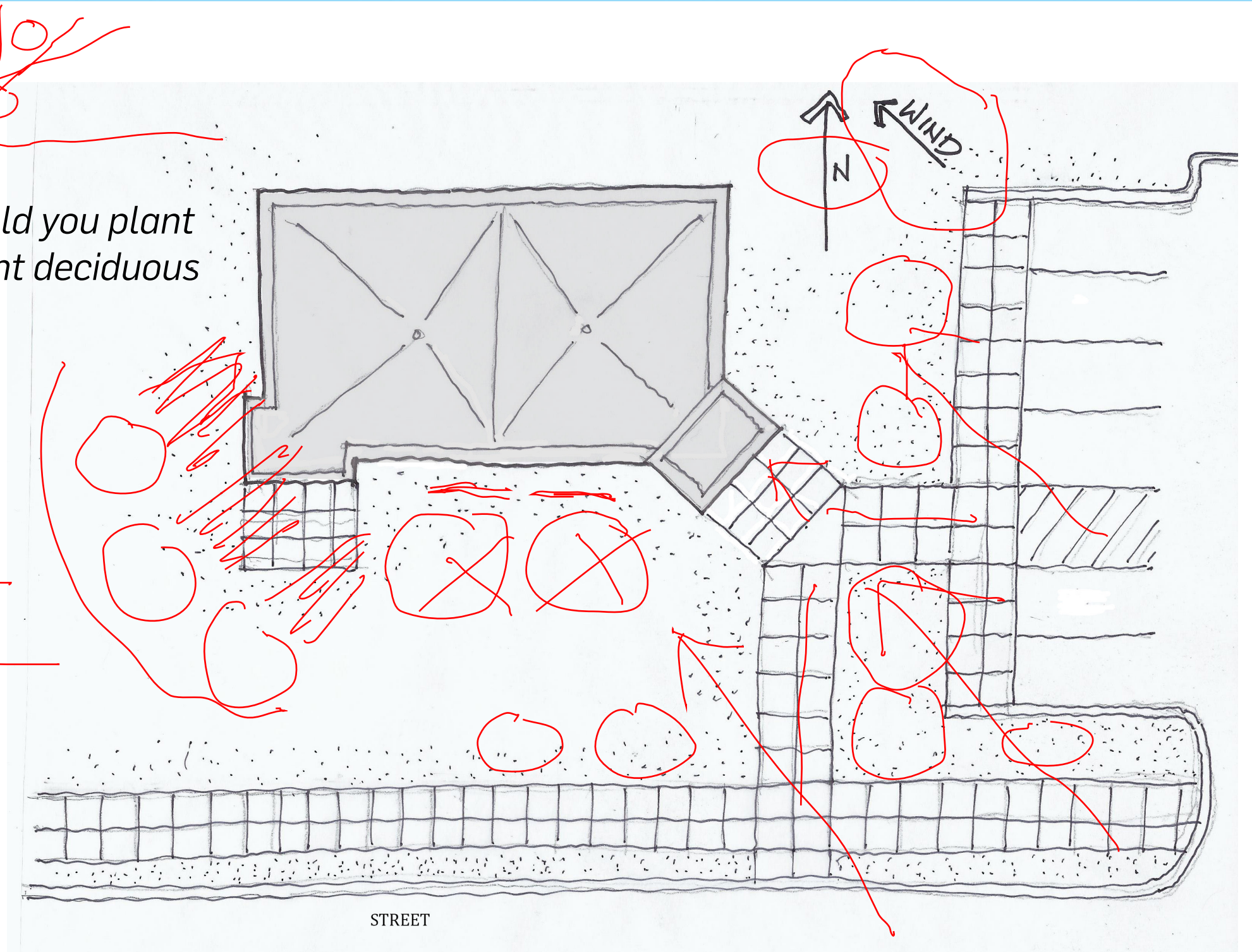
5. Looking at the Site Plan below, where would you plant coniferous trees and where would you plant deciduous trees in a temperate climate?



DECID  
SUMMER  
SHADE



CONF  
WINTER  
WIND



## PPP - MINI-MOCK EXAM

---

6. *Programming includes all of the following except...?*

a. Goals ✓

b. Preliminary Designs

c. Budgets ✓

d. Room and square footage estimates ✓



## PPP - MINI-MOCK EXAM

---

7. *A mechanics lien is a ...*

- a. An engineer's report
- b. Claim of a percentage ownership of a site
- c. Waiver of rights
- d. A part of a typical payout request



## PPP - MINI-MOCK EXAM

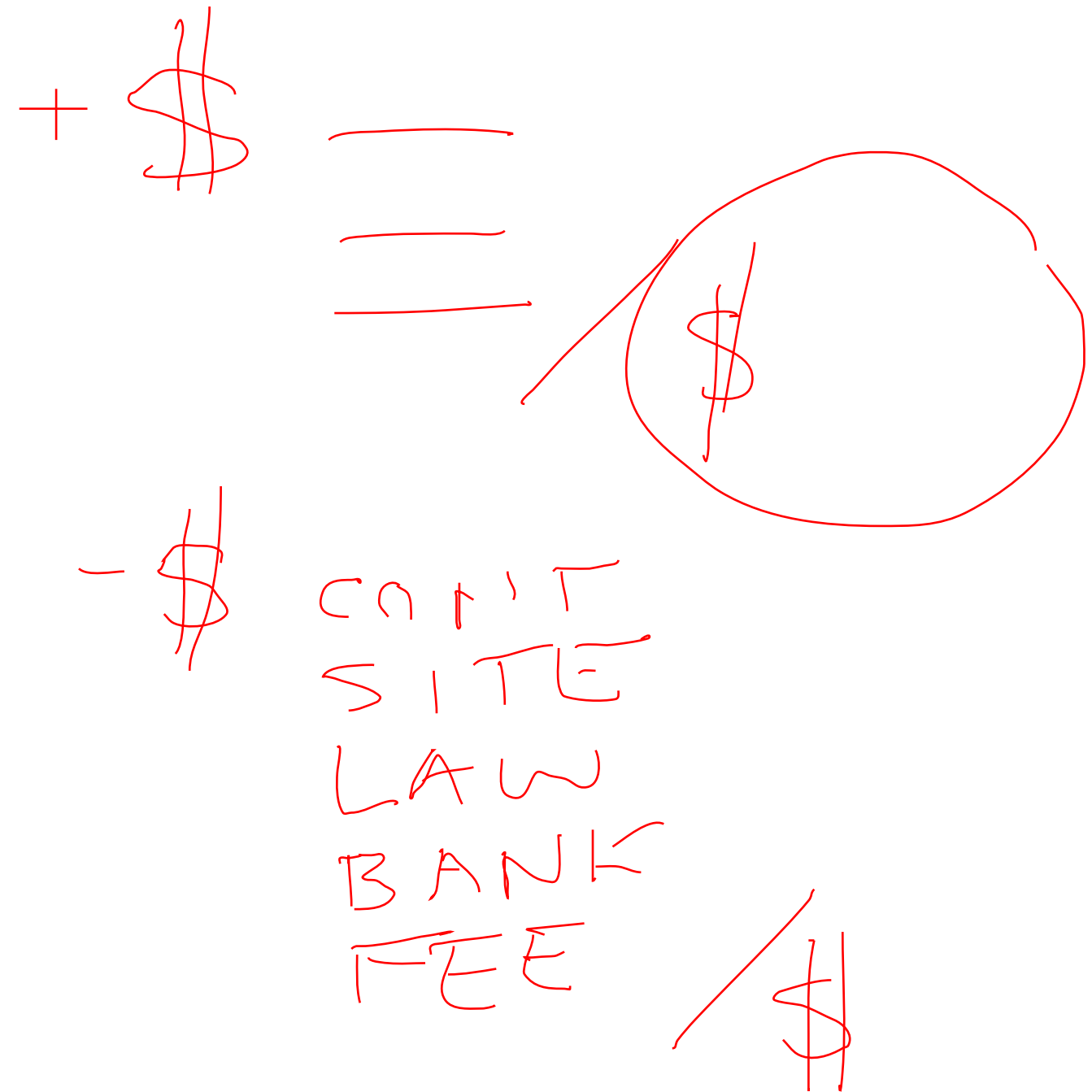
---

8. *An easement is a ...*

- a. A way to ensure that trucks can reach the loading dock
- b. A zoning issue
- c. A contractual relationship that rides on a deed
- d. A right of way for utilities

## PPP - MINI-MOCK EXAM

9. A "pro-forma" is a time honored system for understanding ...?
- a. The formal relationships to be generated in a design process
  - b. All of the pro-bono aspects of a project
  - c. The estimated profits and losses for a development
  - d. The overall schedule of a project



## PPP - MINI-MOCK EXAM

10. While in initial discussions with a new client, you hear that they have had issues in the past with large over-runs of costs that have caused them problems with their funders. You may want to suggest that they look into \_\_\_\_\_ as a project delivery system.

a. Construction Management

b. Design Bid Build

c. A Feasibility Study

d. Fast Track

SP — \$ CM  
DD — \$ CM  
CD — SUPS

↓ \$ Low

\$ +